

LUCIFER®

Electropneumatic Pressure Regulator EPP4 Series

Connection : G 1/4

Catalogue 8682/GB

New Generation

- THE economic solution which meets market requirements
- Compact design
- High responsiveness
- Low power consumption (2.2W)
- Power supply 24VDC
- Hysteresis 0.5%



GRANZOW ^A/_S

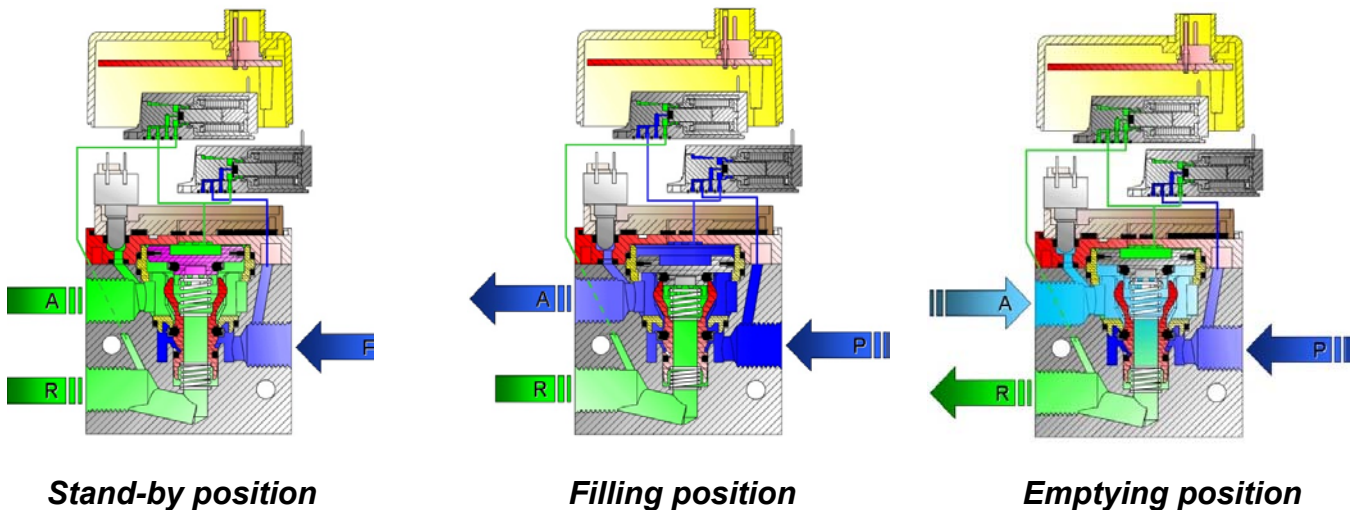
TECHNICAL DATA

Series	EPP4 basic
Order No.	P4BG2xxxAxxx

Mechanical specifications	
Material	Body from anodised aluminium alloy
Connection	G 1/4"
Flow rate m ³ /h	70
Pressure range (bar)	0.05 - 10
Hysteresis	0.5% F.S.
Design	servo-operated
Temperatures	0°C to 50°C
Filtration	50 µm
Air consumption	0
Mounting plate (standard)	for DIN rail or directly by 2x M4 screws

Electrical specifications	
Power supply	24V DC
Power consumption	2.2 W
Control signal U	0-10V (300kΩ) or
Control signal I	4-20mA(0.5kΩ)
Electrical connection	M12 – 3 pins

Notes	
Protection class	IP65
Dimensions (l-w-h) [mm]	60x40x87
Weight [g]	400



GRANZOW ^A/_S